

800-638-0801

**MagneLink** inc.

## Heavy Duty Magnetic Switch for AC Voltage

### APPLICATIONS

Compactor Equipment  
Baler Equipment  
Truck or Trailer Doors  
Rugged Environments

### MAGNETIC SWITCH

#### ADVANTAGE:

Not prone to being over-ridden by tape, mechanical intervention, dirt, or ice.

### GENERAL

#### SPECIFICATIONS

**HOUSING:** Glass-Filled Nylon

**MAGNET:** 1000 Gauss

**CABLE:** 18 AWG with UL PVC jacket

#### OPERATING

#### TEMPERATURE:

-4°F - 140°F (-20°C - 60°C)

**SHOCK RESISTANCE:** 50g

**VIBRATION RESISTANCE:**

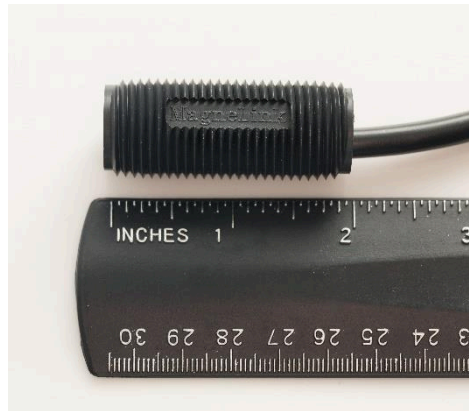
30g

**ENVIRONMENT:** Suitable for use in class 1, 3R & 4 applications

**ACTIVATION DISTANCE:** 0.5

inch minimum, release 1.5 inch maximum

### MLU Housing



- Robust design to extend the life of the switch and allow for maximum reliability.
- Employs a semiconductor device in conjunction with a reed to carry higher AC loads.
- Housing made of Glass-Filled Nylon material. Well suited for rugged environments.
- Threaded housing allows for more adjustment during installation.

### SPECIFICATIONS:

Part Number	Contact Style	Operating Voltage (V)	Operating Current (A)	# of Leads
MLU-Pxx	SPST/Normally Open	120 AC	2	2
MLU-Sxx	SPST/Normally Closed	120 AC	2	2
MLU-Wxx	SPDT	120 AC	2	3

'xx' indicates cable length in feet

### ORDERING OPTIONS:

Contact factory for availability of custom requirements.